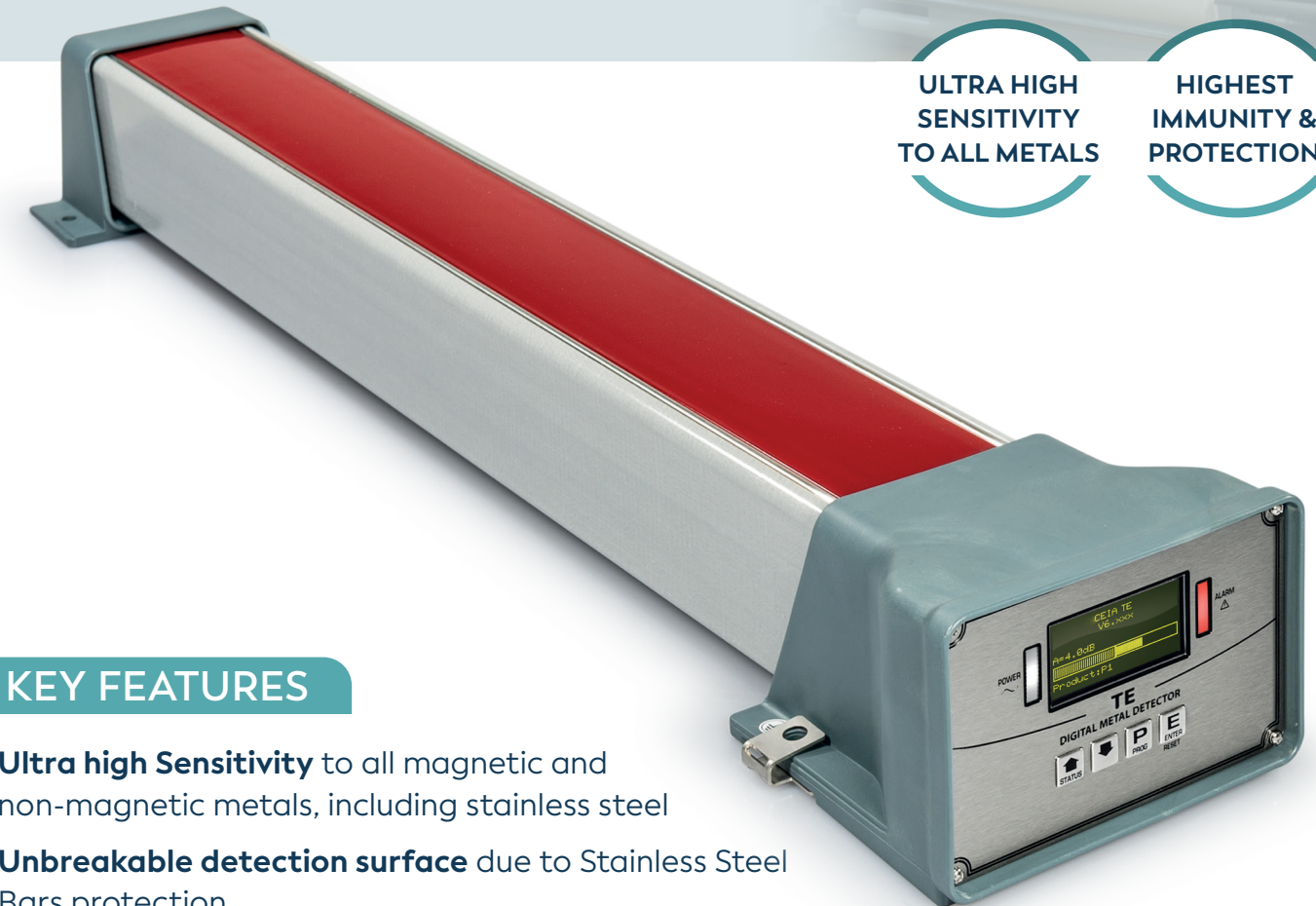


TE

THE MOST ADVANCED DIGITAL BAR METAL DETECTOR

ULTRA HIGH
SENSITIVITY
TO ALL METALS

HIGHEST
IMMUNITY &
PROTECTION



KEY FEATURES

- **Ultra high Sensitivity** to all magnetic and non-magnetic metals, including stainless steel
- **Unbreakable detection surface** due to Stainless Steel Bars protection
- **Compact** and **robust construction**
- **Highest immunity and protection** against electrostatic discharges
- **Wide Detection Speed range**, from 1 up to 600 m/min
- **Complete selection range**: more than 50 models available
- **Easy installation** and **setting**
- **High product temperature working** compliance
- **Stand-alone** and **separate control unit** version (RC) available

BENEFITS

- QUALITY CONTROL
- PROTECTION OF MACHINERY
- MINIMISATION OF PRODUCT REJECT

APPLICATIONS

- PAPER AND BOARD
- TEXTILE AND GARMENT
- PLASTICS AND RUBBER
- RECYCLING



www.ceia.net

QUALITY CONTROL AT ITS FINEST





EASY INSTALLATION
AND SETTING

UNBREAKABLE
DETECTION SURFACE

COMPACT AND ROBUST
CONSTRUCTION

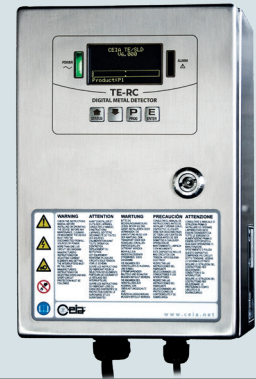
PROGRAMMING FEATURES

- Fully Digital Programming
- Internal data logging with data and timestamp for Quality Control
- Password protected with separate user and engineer level
- BT communication for setting and maintenance through external PC
- Autolearn function for automatic setting of the maximum sensitivity in dry and wet conditions
- Built-in function for automatic measurement of the external interferences

SPECIFICATIONS

STRUCTURES	Protection degree	TE: IP40
		TE-RC: IP65
INPUTS/ OUTPUTS	Voltage	100-240 V- 1ph - 50-60 Hz
	Current	1,5 A max
PROGRAMMING	Type	Local: through built-in keyboard Remote: Bluetooth
	Data capabilities	Internal memory 1000 events 20 products
SIGNALLING	Audible	Internal buzzer
	Visual	Graphic display with bar-graph indication Bright indicators on Control Panel RED: Alarm or fault GREEN: Line present
SECURITY AND SAFETY	Programming access	2 access levels: Operator and Supervisor
	Galvanic isolation of line voltage	
	Low operating voltage	No danger for the operator
	In compliance with international standards of safety and radio interference	
CONTROL INPUTS	Connection for	Alarm reset or Encoder input
	BT interface	Incorporated
OUTPUTS	1 programmable relay	Alarm relay
ENVIRONMENTAL DATA	Temperature	Operating -10 to +50 °C Storage -25 to +60 °C
	Relative humidity	5 to 90 %, without condensation

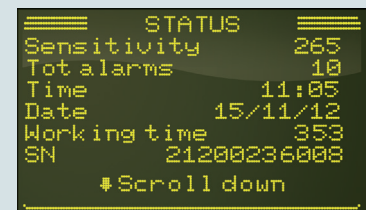
REMOTE CONTROL UNIT



- Separate control unit version (RC) available
- IP65 high degree of protection

MODERN, RUGGED AND USER FRIENDLY PROGRAMMING

- Industrial rate design
- Rapid data entry
- Easy to read, high-contrast graphic OLED display
- Rugged, antivandalic stainless steel keyboard



QUALITY CONTROL SAMPLES

CEIA offers samples for quality assurance testing certified



www.ceia.net



phone +39 0575 4181 • fax +39 0575 418296 • qa-detectors@ceia-spa.com

CEIA reserves the right to make changes, at any moment and without notice, to the models (including programming), their accessories and options, to the prices and conditions of sale. DP001K0005v1000hUK - 2021